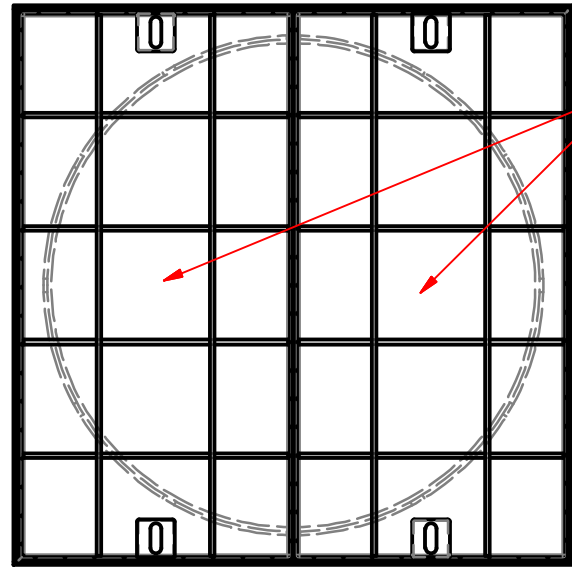


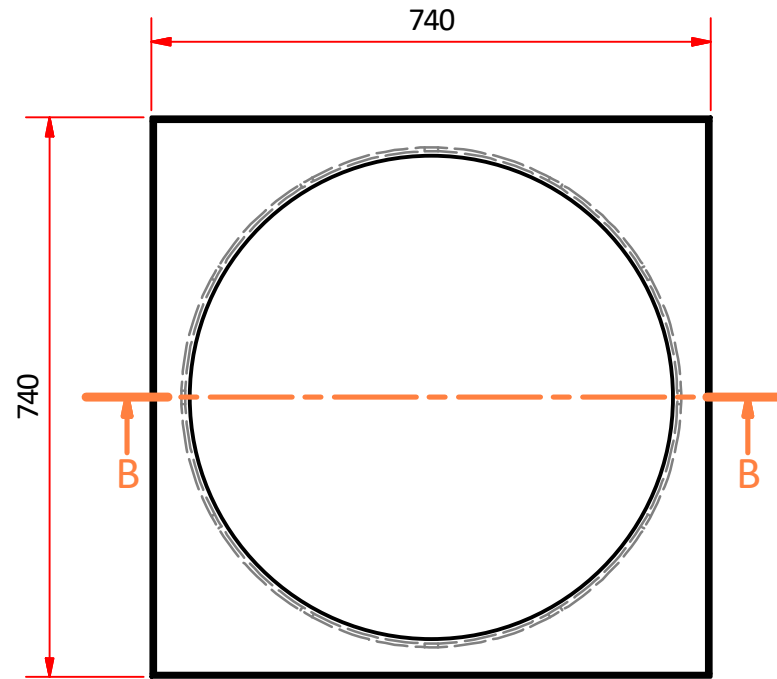
NOTES:

1. MADE TO SUIT T60 CIRCULAR PIT AS PER SD1681, TRI DWG 13978
2. MEET CLASS B DESIGN LOAD AS PER AS3996:2019
3. MADE FROM STEEL GRADE 250
4. HOT DIP GALVANISED TO AS/NZS 4680

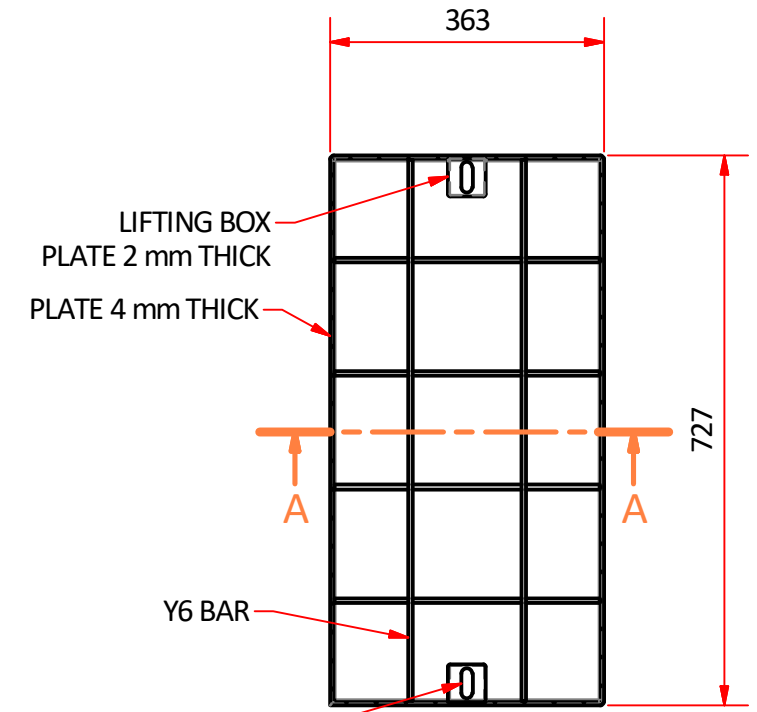


TOP VIEW (1:10)
ASSEMBLED

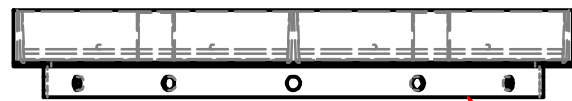
x2 COVER BOXES SHOWN
ASSEMBLED INTO THE
SQUARE TO ROUND COLLAR



TOP VIEW (1:10)
SQUARE TO ROUND COLLAR

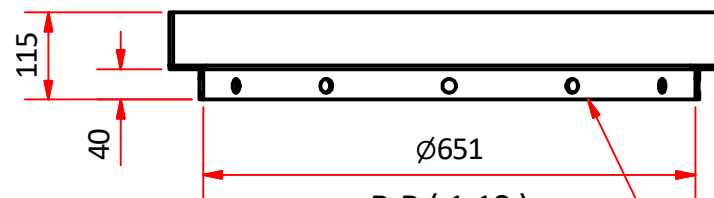


TOP VIEW (1:10)
COVER BOX



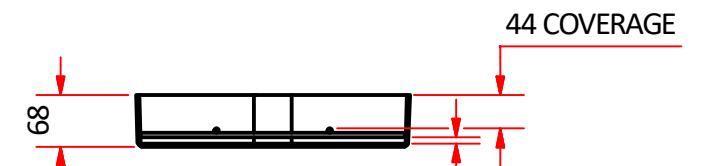
FRONT VIEW (1:10)

FITS T60 PIT
SECURED WITH
x12 M16 BOLTS



B-B (1:10)

RING PLATE 5 mm THICK
WITH x12 Ø18 HOLES



A-A (1:10)

44 COVERAGE
8 COVERAGE

General Notes;

1. All dimensions are in mm
2. Tolerance on all dimensions ± 1 mm unless stated otherwise

Copyright: TRI Underground Australia Pty Ltd

This instruction and all the information herein is the property of TRI Underground PTY LTD. It must not be copied, made public or used directly or indirectly, including manufacture of the product shown herein, without written approval. This instruction is loaned subject to these conditions and subject to return on demand.

Commercial in confidence

	Material STEEL	Designed by IMD	Checked by HL	Approved by HA	Date 5/07/2022	Date 22/01/2022
	Weight APPROX. 48 kg	TRI Underground Australia			Title T60 2 PART SQUARE TO ROUND INFILL COVER & FRAME	
	Finish GALVANISED				Dwg No. 13277	Edition A